



Cosham Library



Christ Church



Solent Junior School



Solent Infant School



St Andrews



Drayton Methodist Church



Drayton Surgery



Drayton & Farlington Information Centre



Cosham Police Station



St Colman with St Paul



Cosham Health Centre



Church of the Resurrection



Cosham Community Centre



Cosham Baptist Church



Court Lane Junior School



Court Lane Infant School



Highbury Primary School



Highbury College



Redwood Park School



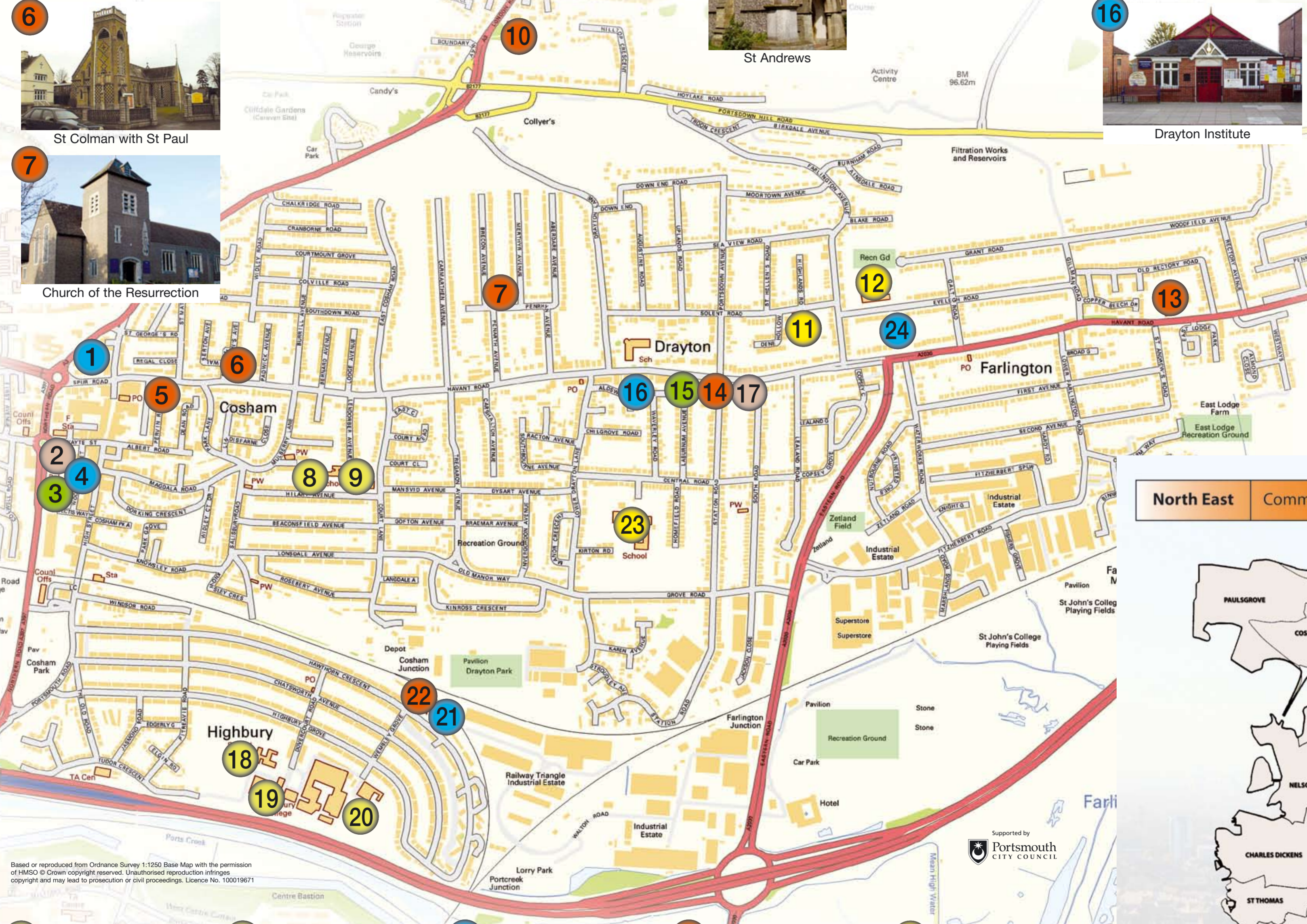
Highbury Community Centre



St Philip



Springfield School



Based or reproduced from Ordnance Survey 1:1250 Base Map with the permission of HMSO © Crown copyright reserved. Unauthorised reproduction infringes copyright and may lead to prosecution or civil proceedings. Licence No. 100019671

North East Community Improvement Partnership



www.necip.co.uk

COMMUNITY MAP



8787 - Printed by Amey, 02-10 1023 9283 4411

Map Ref	Name	Contact details	Service provided
SCHOOLS AND COLLEGES			
9	Court Lane Infant School	Hilary Avenue, Cosham PO6 2PP 023 9237 8890 www.courtlane-inf.portsmouth.sch.uk	Infant school for children aged 4 – 7 years Breakfast and after school club
8	Court Lane Junior School	Hilary Avenue, Cosham PO6 2PP 023 9237 5444 www.courtlanejunior.co.uk	Junior school for children aged 7 – 11 years After school club
9	Highbury College	Dovercourt Road, Cosham PO6 2SA 023 9238 3131 www.highbury.ac.uk	Tertiary college for young people and adults 16+
18	Highbury Primary School	Dovercourt Road, Cosham PO6 2RZ 023 9237 5404 www.highbury-prim.portsmouth.sch.uk	Primary school for children aged 4 - 11 years Full daycare, Breakfast club, After school club, Holiday club
20	Redwood Park School	Wembley Grove, Cosham PO6 2RY 023 9237 7500 www.redwoodparkschool.com	A secondary school for children aged 11 – 16 years who have moderate learning difficulties
12	Solent Infant School	Eveleigh Road, Farlington PO6 1DH 023 9237 1073 www.solent-inf.portsmouth.sch.uk	Infant school for children aged 4 – 11 years Breakfast club, After school club
11	Solent Junior School	Solent Road, Drayton PO6 1HJ 023 9237 5459 www.solent-jun.portsmouth.sch.uk	Junior school for children aged 7 – 11 years After school club, Holiday club
23	Springfield School	Central Road, Drayton PO6 1QY 023 9237 9119 www.springfield.uk.net	Secondary school for children aged 11 – 16 years Community Cyber café

HEALTH / MEDICAL / GP			
3	Cosham Health Centre	Vectis Way, Cosham PO6 3AW 023 9221 0200 www.nhs.uk	Community Children and Family team base offering services such as Health Visiting and School Nursing. Well Baby Clinics, First time parents support group and Baby Massage group offered on site
	Admiral House	1st Floor, High Street, Cosham PO6 3BZ 023 921 9396 www.nhs.uk	Children's Palliative Care Service for Children and Young People
	Primary Care Trust and Portsmouth Hospitals	Portsmouth City Teaching Primary Care Trust 023 9282 2444 www.portsmouthcitypct.nhs.uk 023 9228 6000 www.porthosp.nhs.uk NHS Direct 0845 4647	PTCPCT commissions a wide range of services for the local population. These are provided by primary care colleagues, community based services and hospitals. See website for latest annual report and details. NHS Direct offers a 24 hour telephone based advice service for medical problems or queries.
15	The Drayton Surgery	280 Havant Road, Drayton PO6 1PA 023 9237 0422 www.thedraytonsurgery.co.uk	Primary healthcare team offering a range of services.

EARLY YEARS (NURSERIES AND PRE-SCHOOLS)			
6	Abacus Pre-school	St Colman's Church Hall St Colman's Ave Cosham PO6 2JJ 023 9238 6843 www.abacuspreschool.org	Sessional care and education for children aged 3 – 5 years
	Castle pre-school	Community Centre, Hilary Avenue, Cosham PO6 2PP 07724 110966	Wraparound care and education for children aged 2 – 5 years
14	Daisy Chain pre-school	Drayton Methodist Church, Station Road PO6 1PU 07862 718196 www.draytondaisychainpre-school.co.uk	Sessional care and education for children aged 3 – 5 years
	Doll's House Nursery	71 Havant Road, East Cosham, PO6 2JD 023 9238 5858 www.dollshousenursery.co.uk	Full daycare for children aged 3 months – 5 years
	Dysart Nursery	1 Dysart Avenue, East Cosham PO6 2LY 023 9232 7244	Full daycare for children aged 3 months to 5 years
	Farlington Day Nursery	376 Havant Road, Farlington PO6 1NF 023 9235 1205 www.farlingtondaynursery.co.uk	Full daycare for children aged 3 months to 5 years 19
19	Highbury College @ Caterpillars @ Butterflies @ Ladybird Highbury	College, Dovercourt Road, Cosham PO6 2SA 023 9231 3230 023 9231 3464 023 9231 3467	Full daycare for children aged 6 months to 5 years
18	Highbury Nursery and Daycare	Highbury Primary, Dovercourt Road, Cosham PO6 2RZ 023 9221 5600 www.highburnurserydaycare.co.uk	Full daycare for children aged 2 – 5 years
	Little Acorns	Portsmouth Avenue, Drayton PO6 1EH 023 9220 0533 www.littleacornsttd.co.uk	Full daycare for children aged 3 months to 5 years
24	Little Stars pre-school	Scoutland, Havant Road, Farlington PO6 1DL	Sessional care and education for children aged 3 – 5 years
	Mulberry Park Children's Nursery	93 Havant Road, Drayton PO6 2JE 023 9237 7024 www.mulberrypark.com	Full daycare for children aged 0 – 8 years
	Peacock pre-school	15 Birkdale Avenue, Drayton PO6 1EY 023 9279 0017 www.peacockpreschool.co.uk	Sessional care and education for children aged 3 – 5 years

OUT OF SCHOOL ACTIVITIES & CARE (Breakfast, after school and holidays)			
7, 10, 14, 24	Beavers (6 – 8 years)	023 9237 2177 07894 430722 023 9232 5048	There are a number of groups in the area. Weekly meetings are held in community halls. Please phone for more information about venues, days and times. www.scouts.org.uk
6, 7, 10, 13, 14, 24	Brownies (7-10 years)	023 92428218, 023 9271 7324, 01329 511254 023 9235 9411, 07748 908458	There are a number of groups in the area. Weekly meetings are held in community halls. Please phone for more information about venues, days and times. www.girlguiding.org.uk
5	CBC Holiday Club	Cosham Baptist Church, Havant Road, Cosham PO6 2QZ 023 9232 4688 office@coshambaptist.org www.holclub.org.uk	Holiday club to t each children aged 5 – 11 about faith in an interesting and fun manner
7, 10, 14	Cubs (8 - 10 years)	023 9237 2177 07906 677112 023 9232 5048	There are a number of groups in the area. Weekly meetings are held in community halls. Please phone for more information about venues, days and times. www.scouts.org.uk
7, 14, 24	Explorers (Scouts 14 – 18)	07759 855395 023 9237 2177	There are a number of groups in the area. Weekly meetings are held in community halls. Please phone for more information about venues, days and times. www.scouts.org.uk
8, 9, 11, 12	Farlington Wrap-Around Service	Solent Infant School, Court Lane Infant School, Court Lane Junior School, 07986 285282, 07505 471909, 07957 335921, 07821 962322 www.farlingtonwraparound.co.uk	Before and after school care for children aged 4 – 11 years
18	Highbury Breakfast and After School club	Highbury Primary School, Dovercourt Road Cosham PO6 2RZ 023 9237 5404	Before and after school care for children aged 4 – 11 years
6, 7, 10, 13, 14	Rainbows	023 9234 6537 023 9238 5909 07748 908458	There are a number of groups in the area. Weekly meetings are held in community halls. Please phone for more information about venues, days and times. www.girlguiding.org.uk
	Registered childminders	For information contact Portsmouth CHAT (023) 9269 5000 www.childcarefinder.direct.gov.uk	For information contact National Childminding Association 07730 689121 www.ncma.org.uk
14	Scouts (10-14)	023 9237 2177 07940 575761 023 9232 5048	There are a number of groups in the area. Weekly meetings are held in community halls. Please phone for more information about venues and times. www.scouts.org.uk

PARENT & TODDLER AND DROP IN GROUPS			
1	Bounce and Rhyme Time	Cosham Library, Spur Road, Cosham PO6 3ED 023 9237 6023	Shared singing and rhymes for babies and toddlers
5	Children's Centre	Cosham Baptist Church, Havant Road, Cosham PO6 2QZ 023 9237 8393	Please contact for further information about activities in the centre and other locations in the area.
16	Connors Toy Library	Drayton Institute, 238 Havant Road, Drayton PO6 1PA 023 9237 1109 www.ctlib.org.uk	Toy library and drop-in
21	Discovery Playtime	Highbury Community Centre Hawthorn Crescent, Cosham PO6 2TL 023 9238 4864	Qualified childcare workers offering a wide range of activities for everyone to join in
16	Lots of Tots Group	Drayton Institute 238 Havant Road, Drayton PO6 1PA 023 9243 9185	Refreshments, craft available for under 5s
16	Mucky Pups	Drayton Institute 238 Havant Road, Drayton PO6 1PA 0779 9293280 www.mucky-pups.com	Weekly themed sessions for 12mths to 4 years, arts and craft materials provided. Develops hand/eye co-ordination, interaction with other children promoting social skills and children enjoy great self-esteem.
14	MUMBABA Music Group	Drayton Methodist 2 Station Road, Drayton PO6 1PL 01243 389844 www.mumbaba.co.uk	Sing along fun followed by refreshments and a chat for under 5s
5	Music Makers and coffee morning	Cosham Baptist Church Havant Road, Cosham PO6 2QZ 023 92328102 mm@coshambaptist.org	Singing, refreshments and playtime for under 5s
1	Storytime for the under 5s	Cosham Library, Spur Road, Cosham PO6 3ED 023 9237 6023	Stories and rhymes for under 5s

PLACES OF WORSHIP (Community halls available for hire)			
7	Church of the Resurrection Pentryn Avenue,	Drayton PO6 2AP 023 9237 5145 www.farlingtonparish.co.uk	Beavers, Barn Dance Group, Cosham Inner Wheel, Karate, French Conversation, Care & Fellowship Group, Rainbows, Brownies, Tap Dancing, Friends of Portsdown Hill, Guides, Pilates, Cubs, Scouts.
10	Christ Church	The Vicarage, 1a London Road, Widley, Waterlooville PO7 5AT 023 9237 5360 www.christchurchportsdown.org	Martial arts, Badminton, Line dancing, Mothers Union, Judo, Toddlers, Sequence dancing, Scottish dancing, Slimming World, Solent City Chorus, Guiding and Scouts.
	Church of the Nazarene (Wesleyan-Evangelical)	Salisbury Road, Cosham PO6 2PN 023 9237 5237	
5	Cosham Baptist Church	Havant Road, Cosham Portsmouth PO6 2QZ 023 9232 4688 office@coshambaptist.org www.coshambaptist.org	Children's Clubs, Youth clubs, youth groups, parent and toddler coffee mornings, Bethany Care coffee mornings and contemporary worship. Alpha groups and many other meetings and gatherings. Children's Centre.
14	Drayton Methodist Church	282 Havant Road, Drayton, Portsmouth PO6 1PA 023 9247 1221	Rainbows, Scouts, Explorer Scouts, Music to Movement, Women's Fellowship, Dance, Brownies, Line Dancing, Pilates, Rosemary Conley Diet and Fitness, Open Door, Cubs, Mulberry Singers, Yoga, Sing and Sign, Friendship Centre, Floral Group, Beavers, Senior Guides, Badminton, Mumbaba, Modern Dance.
16	Portsmouth Christian Fellowship	Meetings held at: Drayton Institute, Havant Road, Drayton PO6 1PA 023 9286 1169	
13	St Andrews	Havant Road, Farlington, Portsmouth PO6 1AA 023 9237 5145 www.farlingtonparish.co.uk	Mothers Group, Machine Knitting Club, Brownies, Line Dancing, Trefoil Group, Portsmouth 100 Local History Society, 40 Acres Women's Institute, Art, Dog Training, Garden Club, Guitar Workshop, Rainbows, Little Steps Gym, Guides.
6	St Colman with St Paul	The Presbytery, Cosham PO6 2JJ 023 9237 6151	Badminton, Rainbows, Children's Drama, Ballroom Dancing, Friendship Club, Brownies, Slimming World, Jazzy Gold Dancing for over 50s, ABBE Big Band Music, Highbury School of Dancing, British Cactus Society, RSPB.
22	St Philip	Hawthorn Crescent, Highbury, PO6 2TL 02392 375477, 02392 371868 www.stphilips.cosham.org.uk	
	South Road Church	30 South Road, Drayton PO6 1QD 023 9232 7183	

Map Ref	Name	Contact details	Service provided
COMMUNITY BUILDINGS			
4	Cosham Community Centre	Wootton Street, Cosham, Portsmouth, PO6 3AP 023 9238 4712	Rooms and hall for 12 to 200 people available for hire for activities, meetings or functions, Licensed bar open to members and for private functions, Car parking, kitchen & large grassed area, Live music is allowed, photocopy & stage in the hall
1	Cosham Library	Spur Road, Cosham PO6 3EB 023 9237 6023	Books, talking books, videos, DVDs, Playstation games, local history information, a children's fiction dual language collection, books in European languages, local information and free internet and e-mail. Story time, Bounce & Rhyme
17	Drayton & Farlington Information Centre	282 Havant Road, Drayton, Portsmouth PO6 1PA 023 9238 0000 www.draytonandfarlington.com	A range of free and confidential information services. Can obtain or offer information on a range of subjects including benefits, pensions, allowances, housing, reliable trades people, consumer problems, fire prevention and winter warmth. We hold regular Police surgeries, monthly legal advice with a practicing Solicitor and Children's Information Service drop-in sessions. You can use our computers for free, which have internet access and photocopy for a small charge. We can arrange confidential interviews for you with the Listening Group or other appropriate agencies.
16	Drayton Institute	238 Havant Road, Drayton PO6 1PA 023 9237 1109	Family Health Clinic, Breastfeeding Support Group, Weightwatchers, Tea Dancing, Community Coffee morning, Over 50 Retired Persons Association, Swing Dancing, Slimming World, Connors Toy Library, Media Movement, Diabetic Group, Bridge Club, Kick Boxing, Adult Kung Fu, Mucky Pups, Carers Group, HF Rambling Club, Scottish Country Dancing, Lots of Tots, Children's Dance, Art Group, Ward Councillors Surgery.
21	Highbury Community Centre	Hawthorn Crescent, Cosham PO6 2TL 023 9261 8598	Room for up to 90 people available for activities, meetings & functions. Bar facility (alcohol must be purchased through the bar). Live music allowed. Small well laid-out kitchen. Limited car parking.
	The House on the Hill (Royal Navy Community House)	15 Birkdale Avenue, Drayton 023 9265 5611	Open Tuesdays (10.00-12.00) for anyone to pop in, meet others and share a cup of tea. On Wednesdays (3.30 - 5.30) there is an after school play session, and on the last Wednesday of each month the House is open from 7.30pm as a child free zone for those ladies who want to get out for a glass of wine or just a chat! There is a soft play area for the children and a thrift shop selling quality second-hand items, with an informative notice board containing community news and events.
24	Scoutland	Eveleigh Road, Cosham PO6 1DH	Brownies, Explorers, Private Dance Lessons, Yoga, Beavers, Scouts, Dancing for Adults

COMMUNITY COFFEE MORNINGS			
	Every Monday	The Manor House, 43 Court Lane, Cosham PO6 2LJ	10.00 – 11.30
16	Every Tuesday	Drayton Institute	9.30 – 11.30
	Every Wednesday	Church of the Nazarene, Salisbury Road, Cosham PO6 2PN	10.30
6	First Wednesday of each month – Friendship Club	St Colman's Church	2.00 – 4.00
14	Every Thursday – Friendship Centre	Drayton Methodist Church	9.30 – 11.30

PARKS AND PLAY SPACES			
	Cosham Park	Bowling greens, tennis courts and play area	
	Drayton Park	9 Play items, basketball, goals, 5 a-side football. Large park with quality cricket square, football pitch, children's play area, bowling green and rose gardens.	
	East Lodge Park	Open space with children's play area and ballcourt.	
	Farlington Marshes	Public access along the coastal path offers excellent views of Langstone Harbour and is ideal for appreciating the area's fascinating wildlife inhabiting the pools and watermeadows.	
	Farlington Playing Fields	Large area of open space with 11 football pitches and 3 cricket squares.	
21	Hawthorn Crescent Play Area	Children's play area with basketball and kickabout area.	
	Marshfield House	Doorstep site, 3 play items	
	Portsdown Hill	Portsdown is an area of wildlife and historic importance. The 19th century forts positioned along the top of the hill provide a fascinating insight into the area's military history. A wide variety of plants and animals (particularly butterflies) thrive on the chalk grassland and include some species not commonly found elsewhere in Britain. On the hill you will find plenty of car parking space and a variety of trails to follow.	
	Waterworks Field Play Area	5 play items, ball court	
	Zetland Field	Open space with children's play area and ballcourt.	
	Knowsley Road	Ball games. Neighbourhood park	

Advice, Information and Support for families, children and young people			
CAFÉ (Child and Family Enquiries)	0845 671 0271	Service to support the identification, assessment and appropriate referral of children and young people with support needs.	
Carers Centre	65 Kingston Road, Portsmouth PO2 7DX 117 Orchard Rd, Southsea, PO4 0AD 023 9285 1864 www.hids.org.uk/carers/ "CALL" – Carers Active Listening Line 08000 323456	The Portsmouth Carers Centre exists to provide information, support and access to breaks for Carers in Portsmouth. We can support access to breaks like Day Care and Sitting Service as well as working with individuals to find more tailored breaks. We can put you in touch with carers' support groups and sources of help, and also provide advice and a listening ear. The Carers Centre has a library of information available to browse on a wide range of topics of interest to Carers. We can also offer free internet access by appointment.	
Childline	Free national helpline for children in trouble or in danger 0800 1111 www.childline.org.uk		
Citizens Advice Bureau (CAB)	Northern Roundabout, Northern Road, Cosham PO6 3DN 0844 499 4139 www.portsmouthcab.org.uk	The Bureau provides free, confidential and impartial advice, information, guidance and support on most subjects to ensure that individuals do not suffer through ignorance of their rights and responsibilities or of the services available. After consultation at the Bureau, further specialist advice may be obtained by appointment. We offer advice on welfare benefits, consumer and debt, employment, housing & relationship problems.	
Community Wardens	0800 085 3840 communitywardens@portsmouthcc.gov.uk	Community wardens are the 'eyes and ears' of their community, providing a uniformed presence on the streets of Portsmouth aiming to make people feel safer, to deter crime and anti-social behaviour, and help to keep Portsmouth clean and tidy. Community wardens patrol on foot and in vehicles, and are a friendly and approachable point of contact, available to offer help and advice to residents. Community wardens also work closely with partner agencies and local people - promoting community groups and facilities, and helping to build stronger and more confident communities.	
Domestic Violence	Police (in an emergency) 999 Police Domestic Violence Co-ordinators 023 9289 1524 Portsmouth Refuge 023 9229 1034 Housing Needs & Advice 023 9283 4989 Rape Crisis Women's Line 023 9266 9511	Rape Crisis Men's Line 023 9266 9516 Victim Support 023 9265 3111 Social Services 023 9283 9111 Gay Men's Health Promotion 023 9265 5077 Naval Personal & Family Service 023 9272 3533	
Drayton and Farlington Action Group	www.draytonandfarlington.com 023 9238 0000	Produces a community newsletter 'Your Say' which is distributed twice a year, runs the Information Centre, Listening Group and Drop'N'Shop service.	
Drayton and Farlington Neighbourhood Forum	023 9283 4059 (to leave message) neighbourhood.forums@portsmouthcc.gov.uk FREEPOST SCE4515, Civic Offices, Guildhall Square, Portsmouth, PO1 2YZ	A non-political group run by local people, giving them a chance to find out what is happening in their local area, and discusses issues affecting the neighbourhood.	
Drugs Advice	The National Drugs Helpline: 0800 77 66 00 ADFAm: 020 7928 8989	Release: 020 7603 8654 Families Anonymous: 020 7498 4680	
e.VOLve	www.e.volvoe.org.uk	e.VOLve provides an online directory of voluntary and community organisations within Hampshire and the Isle of Wight. The directory also includes organisations providing support from neighbouring areas.	
ISSP Young Offenders Reporting Service and VT Training	260-262 Havant Road, Drayton, PO6 1PA 0800 731 8199 www.vtplustraining.com		
North East Community Improvement Partnership	Manager: Jo Derham 07904 809677 www.necip.co.uk Parent Support Advisor: Cheryl Taylor 07932 602622	We are a group of representatives from schools and their community partners working together to make a real difference to children, young people and families in Drayton, Farlington, East Cosham and Highbury through the delivery of Extended Services.	
Off the Record	250 Fratton Road, Portsmouth PO1 5HH 0808 80 10 724 www.off-the-record.org.uk	Off the record is a free and confidential counselling, support and information service especially for young people aged 11-25.	
PO6 website	www.aboutmyarea.co.uk/po6	LOCAL community website that gives you LOCAL news and information about YOUR area.	
Portsmouth Parent Partnership Service	The Frank Sorrell Centre Prince Albert Road, Southsea, Hants PO4 9HR 023 9273 2542 www.mencap.org.uk/portsmouthpps	Offering support, guidance and advice for parents with children who have special educational needs (SEN) in Portsmouth.	
Portsmouth CHAT – Family Information Service	Portsmouth CHAT Tel: 023 9269 5000 www.asksherlock.info	Offers a wide range of free information on childcare, activities and services for families and children ages 0-19 years. Aims to support working parents in finding out their employment rights. We also offer an online estimator to help calculate Tax Credits and Childcare Employment Voucher entitlement.	
Portsmouth Children's Trust	www.portsmouthchildrenstrust.org	Portsmouth's Children's Trust brings together agencies such as Health, Social Services, Education and Leisure to develop shared ways of working. It is not a separate organisation, but a partnership made up of those key players who are involved with the local community and really want to respond to the needs of children, young people and their families. Together with local people we will tackle the big issues that affect children's lives.	
Portsmouth City Council	Portsmouth City Council, Civic Offices, Guildhall Square, Portsmouth PO1 2BG www.portsmouth.gov.uk City Help Desk Tel: 023 9283 4092 E-Mail: cityhelpdesk@portsmouthcc.gov.uk Switchboard :023 9282 2251 (24 hour emergency cover)		
Relate	32 Chaucer House, Isambard Brunel Rd Portsmouth PO1 2DR 023 9282 7026 www.relateportsmouth.org.uk	Relate offers a wide range of services for couples, families and individuals. We support people through all stages of their relationships and you can access our support on your own or with others, face-to-face.	
Salvation Army	goodneighbours@haven salvationarmy.org.uk 023 9289 0958	The 'Good Neighbours' befriending scheme at The Haven Community Centre	
Samaritans	08457 909090	Samaritans is available 24 hours a day to provide confidential emotional support for people who are experiencing feelings of distress or despair, including those which may lead to suicide	
Support for parents	Parenting UK 020 7284 8370 www.parentinguk.org www.familyandparenting.org Positive Parenting 023 9252 8787 www.parenting.org.uk Parents Centre www.parentscentre.gov.uk Young Minds Parent Information Service 0808 802 5544 www.youngminds.org.uk BBC www.bbc.co.uk/parenting/ Sure Start www.surestart.gov.uk Working families 020 7253 7243 www.workingfamilies.org.uk Families Anonymous (support for drug misuse) 0845 1200 660 www.famanon.org.uk National Step Family Association: Counselling Line 0990 168388	Family and Parenting Institute 020 7424 3460 Parentalk 020 7450 9072/3 www.parentalk.org.uk Information for parents www.direct.gov.uk Parentline Plus – free national helpline for parents 0808 800 2222 www.parentlineplus.org.uk Home Start 0800 088 6388 www.home-start.org.uk Lone parent helpline 0800 018 5026 www.loneparenthelpline.info The Mental Health Foundation 020 7803 1101 www.mentalhealth.org.uk Al-Anon Family Support for alcohol misuse) 0207 403 0888 www.al-anonuk.org.uk	
Support for children and young people	Are you Sorted? Info about health services www.areyousorted.co.uk Children of addicted parents and people www.coap.co.uk The Hideout – support for domestic abuse www.thehideout.org.uk Directgov – government information site with links to many services www.direct.gov.uk/en/YoungPeople/index.htm Bullying – bullying prevention, help, support and advice www.beatbullying.org www.bullying.co.uk www.kidscape.org.uk www.antibullying.net www.bullybusters.org.uk	Support Line – emotional support www.supportline.org.uk NSPCC – help for children and teenagers www.nspcc.org.uk Kids Get Help – help and advice for 7 - 19s www.kidsgethelp.org.uk Young Minds – emotional wellbeing and mental health www.youngminds.org.uk General information for guidance, support, raising aspirations and realising potential www.youthinformation.com www.youthnet.org.uk www.ukyouth.org	

EMERGENCY SERVICES	
Hampshire Fire & Rescue	Service Headquarters, Leigh Road, Eastleigh SO50 9SJ 023 8064 4000 http://www.hantsfire.gov.uk/
Police	In an emergency always ring 999 For non-emergency policing, anti-social behaviour, community safety advice, information and action please ring 101 (calls cost a flat rate of ten pence). Call 0845 045 45 45 if you wish to speak to a police officer or staff member or report a crime (calls are charged at the local rate).

TRAVEL	
Provincial Bus	London Road, Hilsa 023 9265 0967
Stagecoach Coastline	1 Market Parade, Havant 023 9249 8894
Rail	National Rail Enquiries: 08457 48 49 50 www.nationalrail.co.uk

DISCLAIMER NECIP is committed to the highest standards and every attempt has been made to present up to date and accurate information. The detail on the Community Map is for information and guidance only. We have produced this map to improve public access to information about services in our community. We have tried to ensure all the information on this map is accurate and current, but we cannot guarantee this. If you find any mistakes, please let us know. We will correct them as soon as possible. However, this may not be until the next production of the map.

We cannot control the content of, or take responsibility for, services that are maintained by other organisations represented on this map. Any information, products or services on the map are not necessarily endorsed or recommended by us. NECIP accepts no liability for any loss, damage or inconvenience caused as a result of reliance on the information contained in this map.

